









Welcome

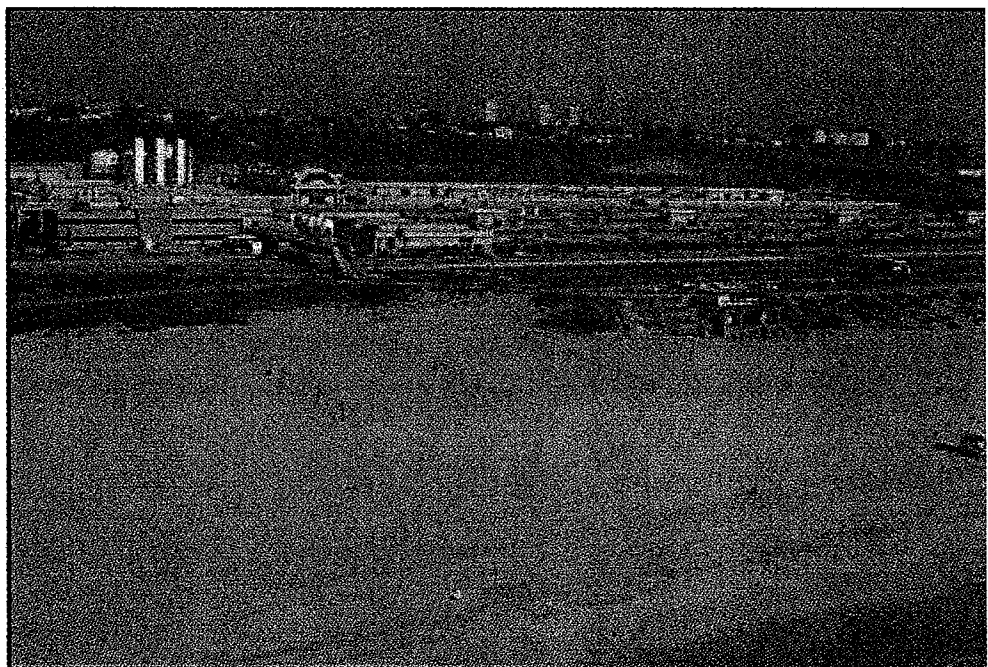
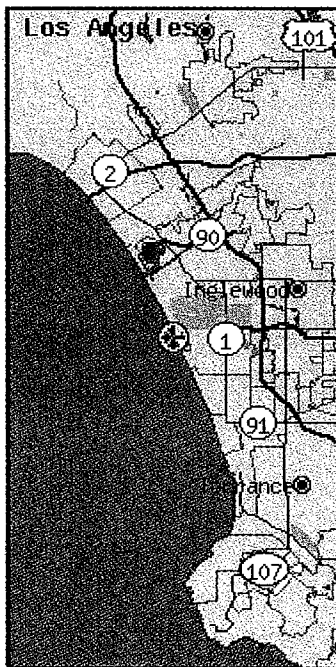
Welcome to the website of the California Coastal Records Project. Our goal is to create a aerial photographic survey of the California Coast and update it on a periodic basis.

Through a special relationship with **Pictopia.com**, you can now purchase high-quality prints of our photographs!

Please join our [user](#) or [announcement](#) mailing lists.

Some users have expressed concerns about this web site. [Read about them here.](#)

Special thanks to [Layer42.NET](#) for providing a home for our web servers.

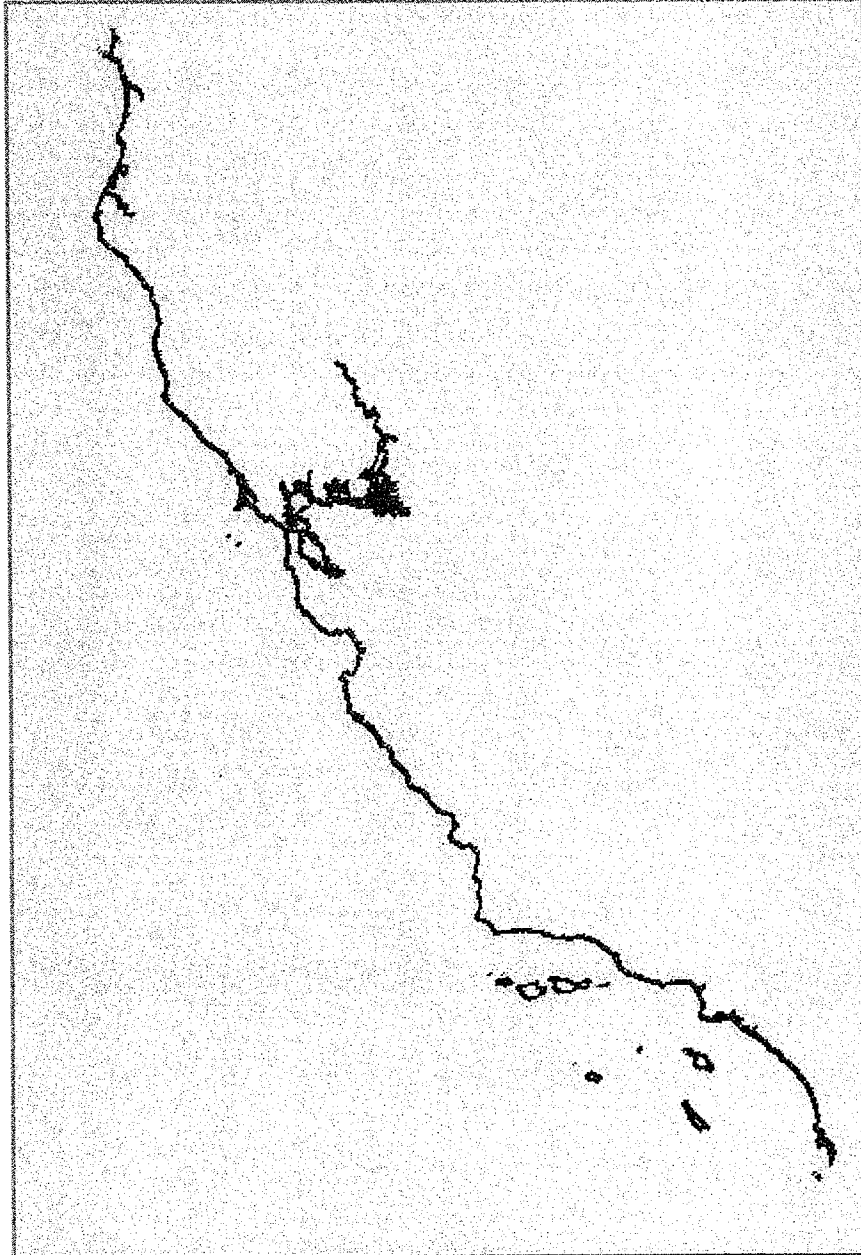


A random image taken at N33 55.45 W118 26.11 on Mon Sep 23 14:54:19 2002
Laguna Beach Hotel

[Copyright © 2002 Kenneth Adelman. All rights reserved.](#)

We currently have over 12,100 photographs (totaling over 82GB) of the California Coast online, covering from the Oregon Border (42N latitude) to the Mexican Border (32.5N latitude), except for the Vandenberg AFB restricted area.

The map on the left shows the coast we've covered (in red) against the entire California coastline (in grey). Click on the map to go to a photograph location. [Click here to access a more detailed map.](#)



Find your initial position along the coast. You may enter a Longitude or Latitude (to find the closest photo to that line) or both (to find the closest photo to that point). If you are having trouble finding your latitude or longitude, click on the map to go to a photograph location.

Latitude N °

Longitude W °

Choose your initial location from our most popular ones:

-or-

Search image captions:

Choose your initial position by photo number:



These photographs are Copyright © 2002-2003, Kenneth Adelman and may not be reproduced without permission.

Copyright © 2002-2003 Kenneth Adelman - Adelman@Adelman.COM

Linking From Your Web Site

Most of the contents of this site are generated by a set of CGI scripts. They are constantly under development, and as such, the URLs generated by these scripts are in a constant state of flux.

We have developed a standard set of URLs so that other sites may link directly into our images. We invite you to link to our site using the following URLs. Linking to our site using any other CGI script or URL, or linking to a hostname other than *www.californiacoastline.org* is likely to result in broken links in the future.

Link to the home page: <http://www.californiacoastline.org/>

Link to a particular image: [http://www.californiacoastline.org/cgi-bin/image.cgi?
image=*image*&mode=*mode*](http://www.californiacoastline.org/cgi-bin/image.cgi?image=<i>image</i>&mode=<i>mode</i>)

Where *image* is an image number returned from a previous query and *mode* is one of the keywords **proofs** or **sequential**. An HTML page in the proofsheets or sequential format will be returned. *Using any other arguments to the image.cgi script is not supported.*

Link to a particular location: [http://www.californiacoastline.org/cgi-bin/location.cgi?
latdeg=*latitude*&longdeg=*longitude*&mode=*mode*](http://www.californiacoastline.org/cgi-bin/location.cgi?latdeg=<i>latitude</i>&longdeg=<i>longitude</i>&mode=<i>mode</i>)

Where *latitude* and *longitude* are expressed in decimal degrees. The image taken closest to this location will be returned. If no images are found within five miles of this location, an error will be returned. *mode* is one of the keywords **proofs** or **sequential**. An HTML page in the proofsheets or sequential format will be returned. *Using any other arguments to the location.cgi script is not supported.*

Link to thumbnail image: [http://www.californiacoastline.org/cgi-bin/thumb.cgi?
image=*image*](http://www.californiacoastline.org/cgi-bin/thumb.cgi?image=<i>image</i>)

Where *image* is an image number. If the *image* argument is omitted, a JPEG image of a random thumbnail will be returned.

If your site uses frames, please link with a target frame of "_TOP", so that our pages are not trapped in your frame. As our pages are designed for full-screen access, viewing our site within your frames will generally not result in a satisfactory experience for the user.

Copyright © 2002 Kenneth Adelman - Adelman@Adelman.COM

California Coastal Records Project

[Home](#)

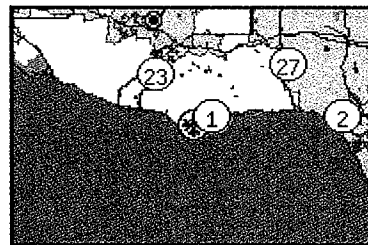
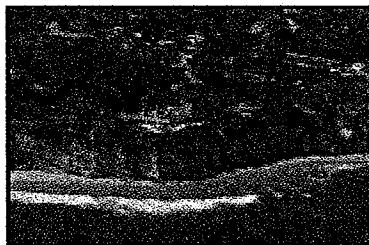
[New Lookup](#)

streisand

[Search](#)

Streisand Estate, Malibu

N34 00.65 W118 47.24 Image 3850 Mon
Sep 23 13:40:04 2002



Copyright © 2002 Kenneth Adelman - Adelman@Adelman.COM

California Coastal Records Project

[Home](#) |
 [<<- Northwest 10](#) |
 [<- Northwest 1](#) |
 [Southeast 1 ->](#) |
 [Southeast 10 -->>](#)

Images "up coast" from the selected image:



N34 00.16 W118 47.33



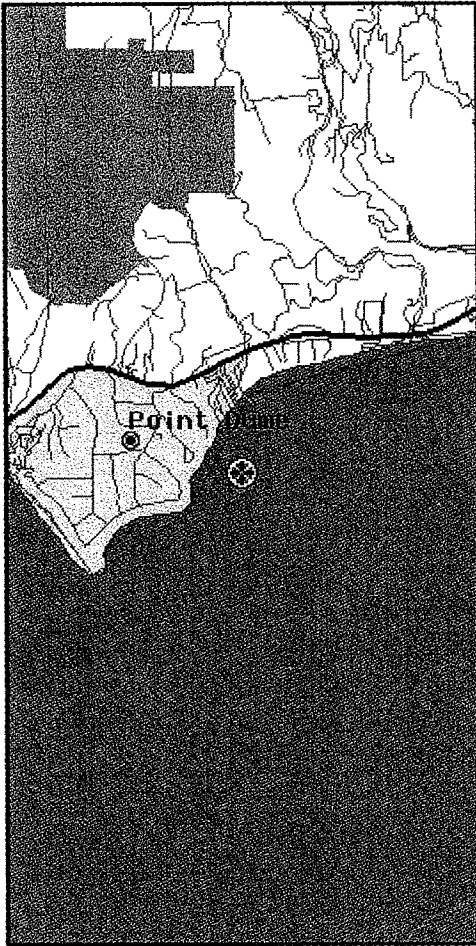
N34 00.39 W118 47.36



N34 00.46 W118 47.36

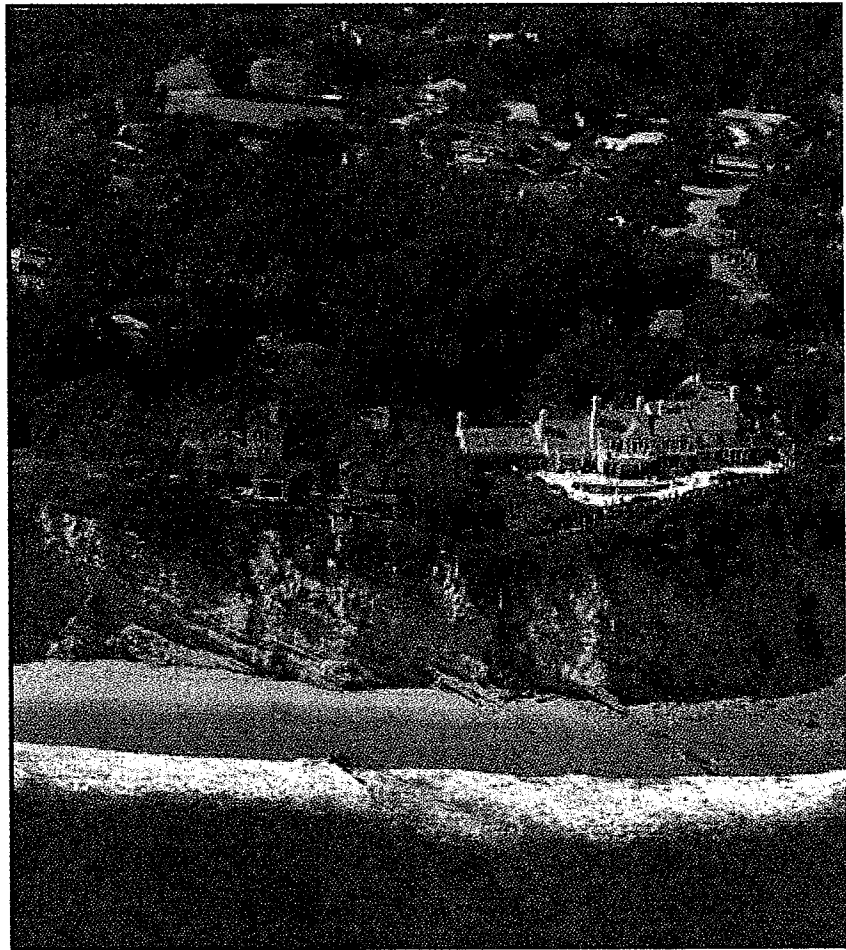


N34 00.52



Helicopter Location

[Zoom Out](#)



N34 00.65 W118 47.24 Image 3850 1

Streisand Estate, Malibu

Copyright © 2002 Kenneth Adelman. All rights reserved.

Purchase Photograph

Images "down coast" from the selected image:



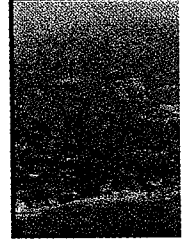
N34 00.27 W118 47.17



N34 00.70 W118 47.19



N34 00.75 W118 47.14



N34 00.41

Home

<<- Northwest 10

<- Northwest 1

Southeast 1 ->

Southeast 10 ->>

Copyright © 2002-2003 Kenneth Adelman - Adelman@Adelman.COM

Exhibit 11 is a map;
too large
to scan.

The Crew



Pilot Gabrielle Adelman and Photographer Kenneth Adelman prepare to depart for Point Reyes.

The Idea

We've flown over most of the California coastline before and have seen the beauty of the natural coastline and destruction that man has wrought unto it. In 1997 we volunteered the use of our helicopter to the Sierra Club. It wasn't long before Mark Massara called us asking for our help working with Gary Lynch, an established environmental photographer from Cambria, to document San Simeon Point for the fight against a huge resort and golf course that the Hearst Corporation wants to build. Our mission and the fight against this development was successful, and from time-to-time over the years we have volunteered our time and resources to help protect the coast.

We've been called to photograph "after" pictures of illegal activity that has destroyed the coast, but rarely do we have the "before" pictures. More than once we wished we'd used the opportunity to photograph a "before" picture.

This started us thinking -- *what if* we photographed the entire coast as a baseline of "before" pictures? We did some film-less dry runs near our home to try to understand how big a project this would be and estimated that it would take 10,000 exposures. The cost of the film and processing, not the mention the problem of indexing, filing, and retrieving the slides, made the project seem prohibitive at the time. Fortunately, technology changes this...

The Camera

The advent of modern digital cameras with resolution in the 6 megapixel range helped make the decision to forgo film and photograph the coast digitally.

A Nikon D1x with a 28-70mm f/2.8 ED-IF AF-S Zoom-Nikkor lens was used to take these pictures. In order to sustain the high frame rate and still shoot at maximum resolution, the camera was tethered with a FireWire cable to a 667Mhz Apple Powerbook running MacOS 9.2 and the Nikon Capture software. The Nikon D1x is also connected to the aircraft GPS receiver using a custom-made cable, thereby recording the latitude, longitude, and altitude of the helicopter in each image file. The Powerbook has a 45GB hard drive, enough to hold a full day of shooting. In the evening, the image files are transferred via FireWire to an external drive for permanent storage. Both the Nikon D1x and Powerbook are powered by a small AC inverter carried aboard the helicopter.

The images are stored in Nikon's proprietary NEF format, and later converted into JPEG using Nikon Capture running on a Power Mac G4 with dual 1Ghz processors. The GPS position is extracted from these files and used to build a sequential index of the photographs that is used to navigate the coast on this website. The smaller preview and thumbnail images are produced from the larger images using Photoshop. It takes approximately four days of post-processing to generate the images and index you see from one day of shooting. The higher resolution NEF format files are not available online, but they, or TIFF format files, could be made available for applications requiring the detail which is lost in the JPEG compression.

We have been very happy with the performance of the camera and computer we are using. Together, they allow us a *sustained* frame rate of a frame approximately every three seconds, without pause, all day long.

The Aircraft

These photographs were taken from a Robinson R44, flown by my wife, Gabrielle Adelman. The helicopter was flown southeast-bound along the coast at altitudes ranging from 150 to 2000ft, but typically 500-700ft, depending on the terrain, detail, and air traffic control constraints. The port-side rear door was removed, giving the photographer an unobstructed view of the coast.

The camera was hand-held to allow the photographer to correct for motion of the helicopter. The image frames are approximately half-overlapping, meaning the shutter was depressed when the image had moved halfway across the viewfinder. For various reasons, we made more than one pass over certain areas. A sort algorithm is applied to the data to merge the photographs from multiple passes into a continuous coastline.

Art or Science?

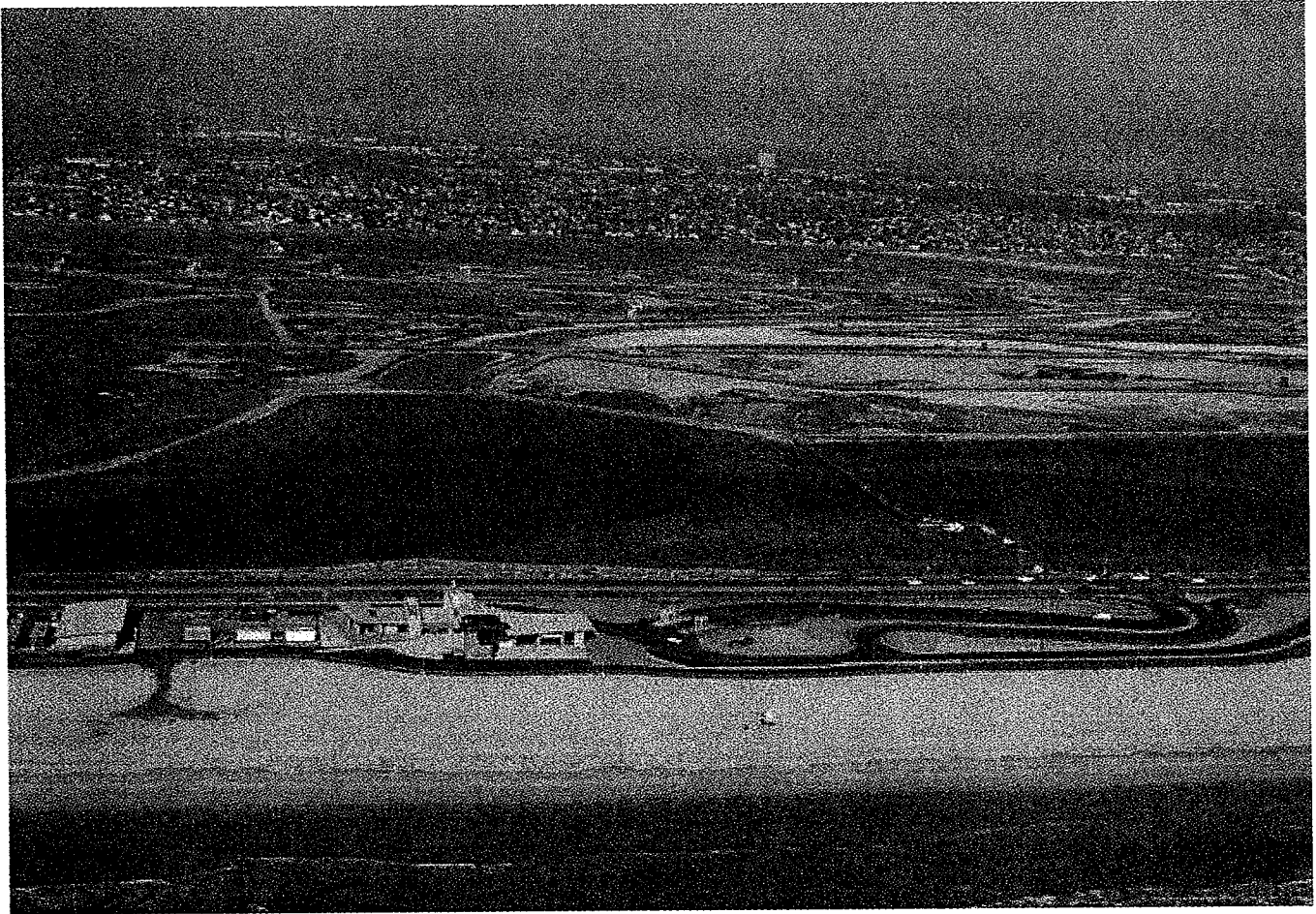
The vantage point of a helicopter offshore at 500 feet provides spectacular views, and is nearly ideal for documenting the development of the coast. This project was not intended to be art for art's sake; it is

intended to create a permanent record of the California coastline. A purely artistic approach could have omitted large areas and would have required seeking ideal lighting for each area. The permanent record approach requires that nothing be missed and sometimes trades off the quality of individual images. The view that we have chosen varies from area to area, depending on the level of development and the contour of the terrain. In some areas, we have covered them more than once at different altitudes and distances.

The Future

This project will never be complete. We plan on finishing the remainder of the coast as soon as the weather will allow. We will re-photograph portions of the coastline every few years, so that historical data is available for research and enforcement purposes. We are looking forward to advances in digital camera technologies up into the 12-20 megapixel range, as these cameras will provide even higher resolution.

Copyright © 2002 Kenneth Adelman - Adelman@Adelman.COM



Online fulfillment by Pictopia.com
The Internet's highest quality photo lab



California Coastal Records Project PHOTO REPRINTS

[Location Lookup](#)



Image 3850

Select quantity and sizes you want to order:

[View Cart](#)

Qty	Description
<input type="checkbox"/> 1	8x12.3 Matte Print (\$50.00 each)
<input type="checkbox"/>	11x16.9 Matte Print (\$60.00 each)
<input type="checkbox"/>	16x24.6 Matte Print (\$80.00 each)
<input type="checkbox"/>	20x30.7 Matte Print (\$120.00 each)

[FAQs](#)

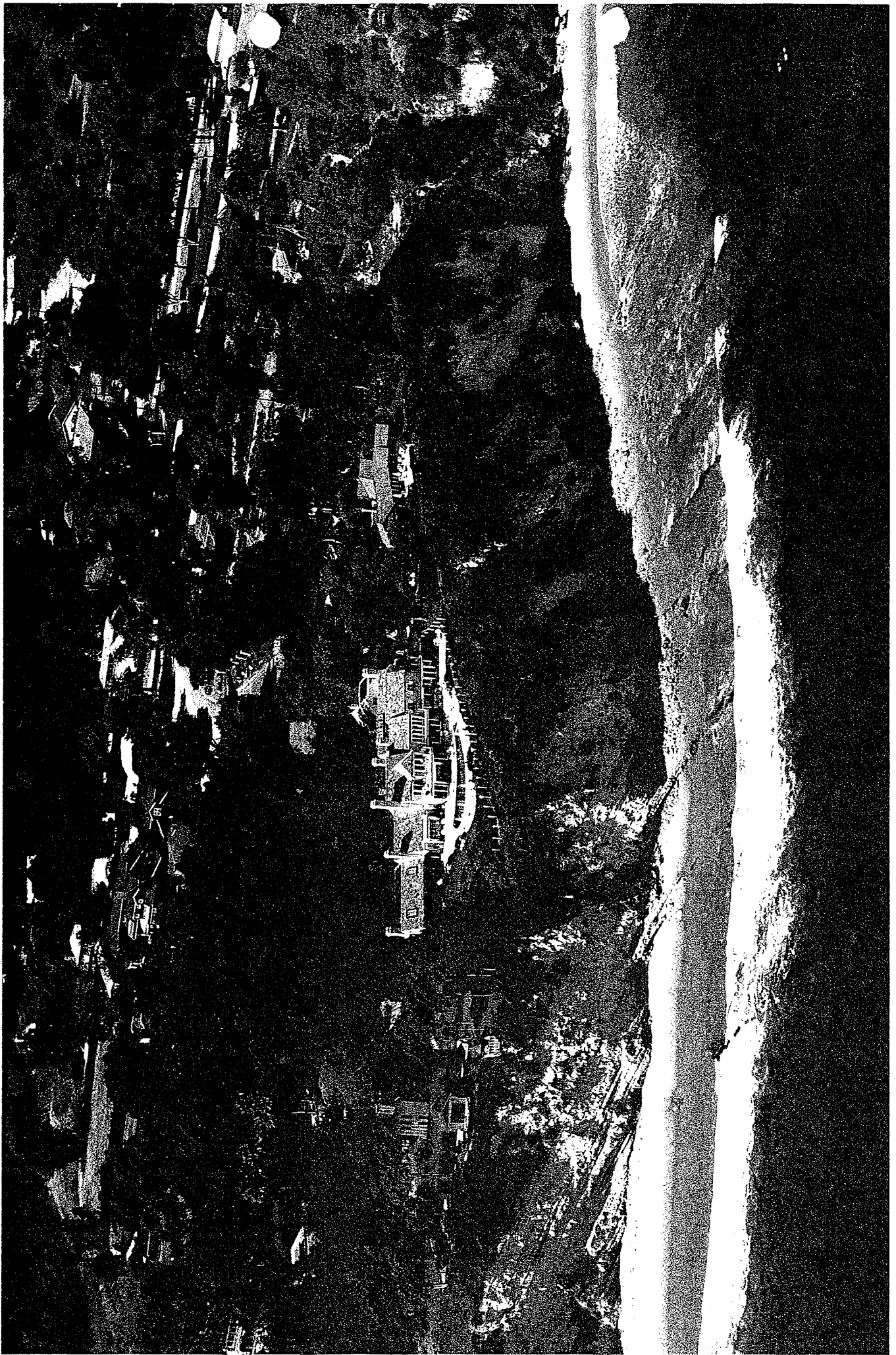


Exhibit 16 missing
because too large
to scan

Public Response to this Site

The public support for this site has been overwhelming. 200,000 visitors in our first three weeks of operation is a testimony to this. Many of you have written in support, and described how you're using the site, so many that I'm overwhelmed with email. A few have raised some questions about the site that I'd like to address here.

When someone tells you that we shouldn't be publishing something, you should wonder what their motivation is. The difference between the "haves" and the "have nots" in the 21st century is not going to be about money, but information. This flow of information is critical in a democracy and permits each voter to form his or her own opinion about the matters which are important to us.

This project's goal is to bring the truth (in the form of photographs) to the public.

Environmental Concerns

A number of visitors have expressed concerns about our use of a helicopter and the effect on the environment. We are using a modern piston-powered Robinson R44, the safest and most efficient helicopter made today. It gets about 13mpg, approximately the same as most SUVs on the road today.

We're aware that we burn fossil fuels operating our helicopter, and sincerely believe that the environmental good that will come from this project far outweighs the bad. Furthermore, we have almost completely eliminated our use of fossil fuels in our terrestrial transportation by driving electric cars which we charge using our photovoltaic solar system.

Privacy Concerns

We are aware that we have photographed a number of homes in the process of documenting the California Coast. The California Coast is a unique and beautiful place, and those people who have chosen to live on it have made the coast a part of their lives, and their lives a part of the coast. It should come as no surprise that the public at large would be attracted to view this beautiful place some call home. We have little sympathy for those who would feel that in order to enjoy the beauty of the coast that they must deny others access to it.

All of the photographs on this site have been taken from a public place and in compliance with applicable Federal and State laws.

Please be sure to review some of the highest resolution photographs before forming your own opinion. You cannot see much detail, for example, identify individuals or see into a house. Also, as discussed in the next section, this information is available elsewhere.

A very good book about how technology will affect the privacy of all of us is The Transparent Society: Will Technology Force Us to Choose Between Privacy and Freedom? by David Brin.

Security and Terrorism Concerns

This site contains photographs of some locations that might be of interest to terrorists. We have thought long and hard as to whether the publication of these photographs is a real security risk that outweighs the enormous good that could come from this project. It is important that the project be a *complete* record of the coast, and it could not be if we redacted this material.

We do not believe that our publication of these photographs, in and of itself, creates a real risk because:

- **Photographs like these are available elsewhere on the web:** A quick search of Google for any of these facilities will return much information, including photographs, some of which are from government web sites.
 - Microsoft's Terraserver has pictures of the **entire** country, with free, unfettered access to all.
 - Mapquest or Yahoo maps offer you a "click here to see a photo" link when you bring up a map given an address. Enter 1600 Pennsylvania Ave., Washington DC, for example...
- **Photographs like these are easy to take:** Anyone could charter a plane for a few hundred dollars and take pictures with this resolution using an ordinary 35mm camera. There is no "rocket science" involved. We are more interested in providing a historical record; terrorists are more interested in current photographs.
- **Exposing security problems will get them fixed:** There is no true security in obscurity. Public knowledge of a security flaw forces the flaw to be fixed. We have learned this a long time ago in the software industry.

Furthermore, there are enormous reasons that the public should specifically be permitted to view these facilities:

- **Many are damaging to the environment:** They include facilities like power plants and refineries that are enormously destructive to the environment. Because access to these sites is in some cases restricted, much of the damage occurs far from public scrutiny. For example:
 - Powerplants use once-through cooling, sterilizing billions of gallons of sea water per day and in some cases, discharging this water into our National Marine Sanctuaries.
 - Water desalination plants discharge brine with two to three times the normal concentration of salt. This brine sinks to the ocean floor without mixing and kills sea life.
 - Sewage plants discharge raw or untreated sewage into the sea.
 - Many sites build sea walls that destroy the beach.

New Concerns?

I would be happy to discuss any *new* concerns you may have about the project.

Rants

Here are some of the rants that we have received and would like to share with you for your amusement.

They have been reformatted to fit your screen.

This first rant was recorded by my answering machine. I'm not sure who the author is, but the Caller ID on my answering machine indicated a number of 707-538-2768 and name of Jeanette McFall. This lady *really* doesn't want to be on the Internet. If this is really Jeanette Lynn McFall of Santa Rosa, CA, age 43, she shouldn't worry, because I have no plans to photograph Santa Rosa. She *should* instead be concerned because there is a lot more personal information publically available on the Internet than these photographs.

If anyone knows what this guy is talking about, please let me know. I haven't studied much geology. He would obviously make a great screenwriter of James Bond movies. Oops, too late. This seems like it is right out of the plot to "View to a Kill".

From: "Kumar Subramaniam" <paulmar3@hotmail.com>
To: sjordan51@aol.com
Subject: Suggestion
Date: Tue, 05 Nov 2002 08:38:01 -0800

Hi Susan,

I deeply appreciate your website. You are trying to do something that is great and useful to protect California environment. I lived in CA and took all those fabulous rides around the coast. Your photographs are amazing.

But I have a suggestion that you may want to strongly consider. I come from a background which you may not understand fully. I have 2 Masters degree in engineering related to geotech etc. and performing advanced research on earthquake prediction etc. I track quakes that involve people lives and have been more successful than even the best agencies spending billions on it.

To me the exposure of California coastline to the public this way is extremely dangerous for the following reasons:

After 9/11 exposing your coastline without proper computer system policies (preferred users) will achieve dangerous results i.e. opposite to what you are trying to do.

I beg you not to expose CA to the whole world at this time. It is pretty easy for terrorists to target your sites. I speak with great scientific backing after studying with the top most scientist related to geology on earth. There are many many ways that one could cause serious harm to CA with least of equipments not from the traditional weapons of mass destruction but with something totally different which people like me and few know and do not tell it out for security reasons.

Even if they may or may not be able to do it today they can certainly in say 5 years when all this 9/11 would have been forgotten.

The security system in this nation cannot cover all those things as it is very very expensive to save the whole Coast that too there are no geologist with such a background who work for your top security agencies. I know that.

So, I beg you to not expose these coastlines as it will achieve something that you can never ever imagine. No geologist will tell you all this openly because of security reasons.....

To me you should have restricted access to your site and you have to have a reasonably good mechanism as to whom you expose this site.

You can contact the experts in the field of system policy and how to implement it.

Even otherwise, please wait with your environmental concerns for at least a year till the national security system is in place. Please. I studied in the top health and safety and earth science school.

Thanks
Kumar

Likewise, I've always wanted to visit Cuba, and thought I would have to wait until after Castro dies. I have thanked the writer for his offer of media attention and offered our helicopter services to Mr. O'Reilly. As you can see from my portfolio, my wife and I are experienced aerial photographers:

Date: Thu, 07 Nov 2002 12:12:12 -0800
From: smd <smd@inreach.com>
Subject: National Security

Dear Ken,

RE Californiacoastline.org

We turned you in to GWB & FBI & Coast Gurad for your flagrant breach of National Security in time of War. I hope they bust your traitor arse and send it to Guantanamo.

You may be able to mitigate and limit the damage you have done by taking down the server to this entire site immediately and apologizing to the President personally. Such total disregard for human life is beyond belief!

Specifics? Well for starters how about Diablo Canyon N35 12.48 W120 52.21 #2204big These high resolution photos show every detail of the place, every fence, wire, barricade, spent fuel pools, every rock. I wouldn't be surprized to find out bin Laden has set it as his screensaver. We notified PG&E and SCE security.

If this is not taken care of immediately, we will also forward this to the media and the backlash and outrage will be incredible. I hope Bill O'Reilly posts high resolution photos of your swimming pool online! Do unto others...

Most Sincerely,
SMD

There seems to be a common theme in these last two email rants. Quoting from my Diagnostic and Statistical Manual of Mental Disorders, Fourth Edition, usually referred to as the "DSM-IV", under Section 297.1 "Delusional Disorder", Subtype "Grandiose",

" This subtype applies when the central theme of the delusion is the conviction of having some great (but unrecognized) talent or insight of having made some important discovery. Less commonly, the individual may have the delusion of having a special relationship with a prominent person (e.g., an adviser to the president) or being a prominent person (in which case the actual person may be regarded as an imposter). [...]"

...but of course, I'm not a psychologist and I'm not qualified to make this diagnosis, and there are other preconditions (like the delusion needs to last a month) for the diagnosis.

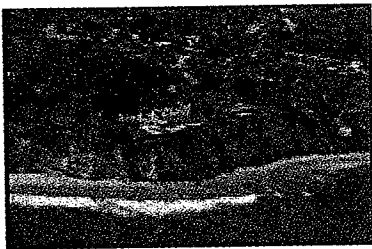
Copyright © 2002-2003 Kenneth Adelman - Adelman@Adelman.COM

Welcome

Welcome to the website of the California Coastal Records Project. Our goal is to create an aerial photographic survey of the California Coast and update it on a periodic basis.

Barbra Streisand Sues to Suppress Free Speech Protection for Widely Acclaimed Website

Barbra Streisand, known for espousing pro-environmental views and criticizing those who don't, has sued the California Coastal Records Project, a landmark photographic database of over 12,000 frames of the California coast shot since 2002, asserting that the inclusion of a single frame that includes her blufftop Malibu estate invades her privacy, violates the "anti-paparazzi" statute, seeks to profit from her name, and threatens her security. Other defendants in the case are the Project's Internet Service Provider, [Layer42.NET](#), and [Pictopia.COM](#), who provides finished prints of the photographs.



[Click here for more information on her lawsuit](#)

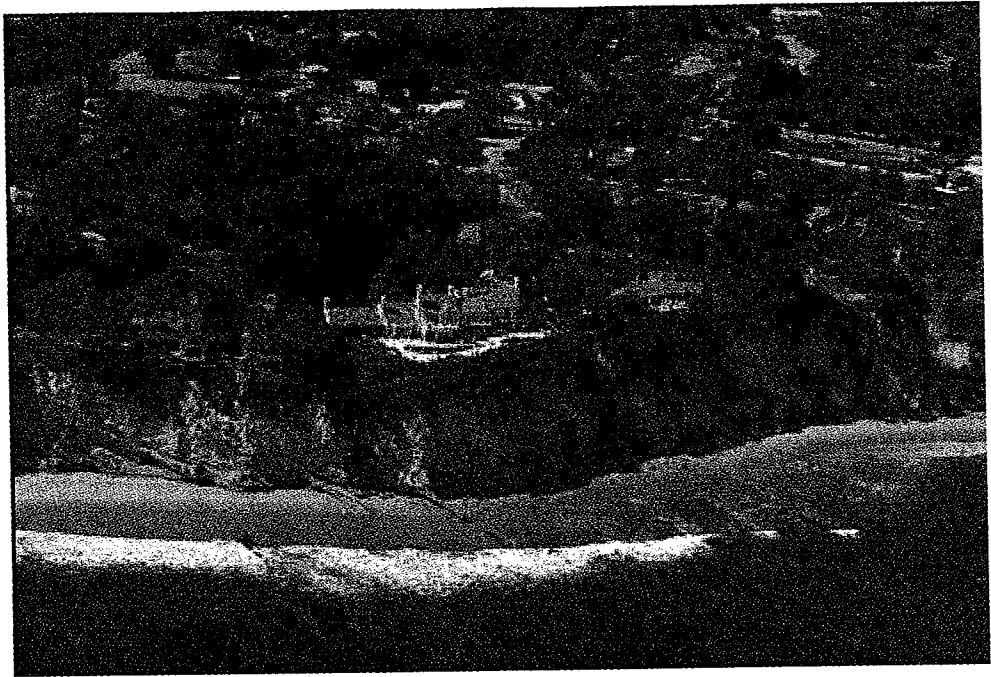
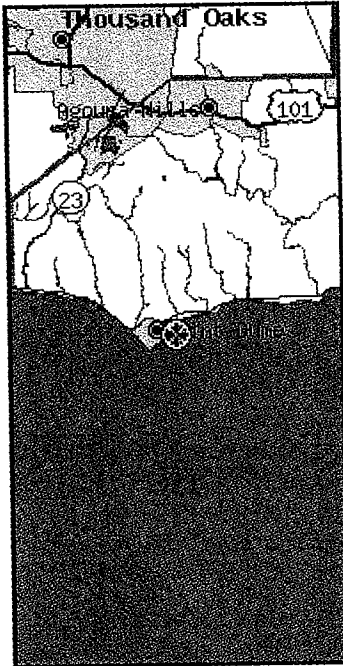
[Click here to see the photograph she is complaining about](#)

Through a special relationship with [Pictopia.com](#), you can purchase high-quality prints of our photographs!

Please join our [user](#) or [announcement](#) mailing lists.

Some users have expressed concerns about this web site. [Read about them here.](#)

Special thanks to [Layer42.NET](#) for providing a home for our web servers.



A random image taken at N34 00.65 W118 47.24 on Mon Sep 23 13:40:04 2002
 Streisand Estate, Malibu

Copyright © 2002 Kenneth Adelman. All rights reserved.

We currently have over 12,200 photographs (totaling over 82GB) of the California Coast online, covering from the Oregon Border (42N latitude) to the Mexican Border (32.5N latitude), except for the Vandenberg AFB restricted area.

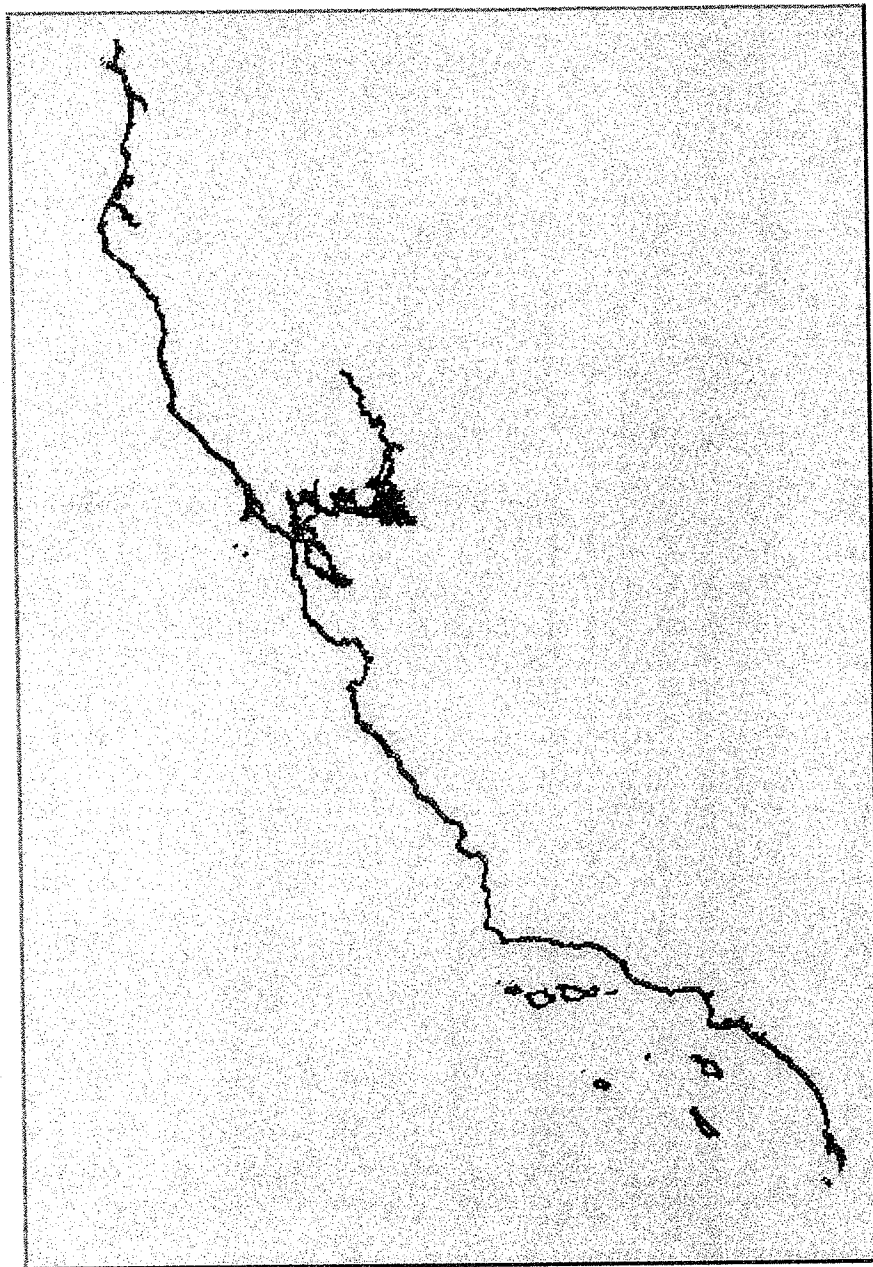
The map on the left shows the coast we've covered (in red) against the entire California coastline (in grey). Click on the map to go to a photograph location. [Click here to access a more detailed map.](#)

Find your initial position along the coast. You may enter a Longitude or Latitude (to find the closest photo to that line) or both (to find the closest photo to that point). If you are having trouble finding your latitude or longitude, please

Latitude N °

Longitude W °

Lookup image



Choose your initial location from c
popular ones:

San Simeon Point, San Simeo

Go there

-or-

Search image captions:

Search

Choose your initial position by phc
number:

Go ther

These photographs are Copyright © 2002-2003, Kenneth Adelman and may not be reproduced without permission.

Copyright © 2002-2003 Kenneth Adelman - Adelman@Adelman.COM

Barbra Streisand Sues to Suppress Free Speech Protection for Widely Acclaimed Website

Barbra Streisand, known for espousing pro-environmental views and criticizing those who don't, has sued the California Coastal Records Project, a landmark photographic database of over 12,000 frames of the California coast shot since 2002, asserting that the inclusion of a single frame that includes her blufftop Malibu estate invades her privacy, violates the "anti-paparazzi" statute, seeks to profit from her name, and threatens her security. Other defendants in the case are the Project's Internet Service Provider, [Layer42.NET](#), and [Pictopia.COM](#), who provides finished prints of the photographs.

Since shortly after our web site "went live", Barbra Streisand has been complaining about a photograph on our web site, 3% of which covers her home. In February 2003, we received a threatening letter from her attorney, [John Gatti of Alschuler Grossman Stein & Kahan LLP](#), demanding that we "immediately cease and desist from photographing and displaying and identifying photographs of Ms. Streisand's home on the website [www.californiacoastline.org](#) [...]".

We refuse to be intimidated by these tactics, which would undermine our constitutional protection of free speech and which would compromise the integrity of this historical and scientific database. As a result of which, we received a second threatening letter.

Our goal is to create a complete record of the California coastline. This record has been used by a number of government, university, press, and environmental groups ([partial list](#)) free of charge. *It is not possible to provide the public with a complete record without the photographs of the coast that happen to include Ms. Streisand's estate. We do not believe in giving special treatment to wealthy coastal land owners.*

Ms. Streisand, who purports to espouse the First Amendment right of freedom of speech (See "[My Thoughts On Freedom of Speech](#)" (scroll down to "My Thoughts"), at [www.barbrastreisand.com](#)) apparently feels differently when the publication of a photograph shows her backyard.

Here is a copy of the Complaint that Ms. Streisand filed against us in Superior Court in Los Angeles. *All of her claims are frivolous and will be vigorously defended.*

Read our full press release here [HTML](#) or [PDF](#).

Or see what the press is saying about the lawsuit:

[Streisand Sues Over Photograph of Her Coast Home on Web Site](#) [Los Angeles Times](#), May 30, 2003
[Streisand files \\$50 million lawsuit over aerial photos](#) [Associated Press](#), May 30, 2003

Copyright © 2003 Kenneth Adelman - Adelman@Adelman.COM